

BWM Schutterwald 2014

Prüfung Nr.: 28

3. WP Junioren

Spring-LP m. Stechen

Klasse: S*

Sonntag, 20. Juli 2014

Beginn: 11:45 Uhr

Richtverf.: A
LPO § 501,B1
RG / Art.
Höhe: 1,40 mtr.

Tempo: 350 m/Min.

Bahnlänge: 460 mtr.
Erlaubte Zeit: 79 sek.
Höchstzeit: 158 sek.

Hindernisse: 11
Sprünge: 14
Hindernisfehler: sek.
geschl. Hindernis:

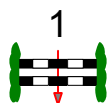
1. Stechen über:
1,2,3,4a,4b,5,6,13

Bahnlänge: 265 mtr.
Erlaubte Zeit: 46 sek.
Höchstzeit: 92 sek.

2. Stechen über:

Bahnlänge: 0 mtr.
Erlaubte Zeit: 0 sek.
Höchstzeit: 0 sek.

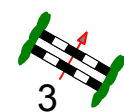
Start



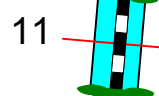
1



6

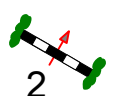


3

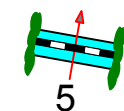


11

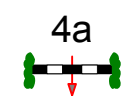
Ziel



2

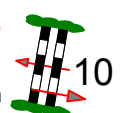


5



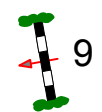
4a

13
nur für
Stechen

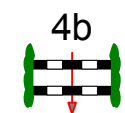


10

Ziel
Stechen



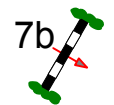
9



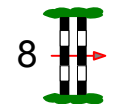
4b



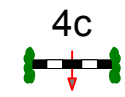
7a



7b



8



4c

Course Designer

Kurt Braunschweig...GER

Richter



80mx65m